

Project Name: _____
 Location: _____
 Engineer: _____
 Submitted to: _____
 Submitted by: _____
 Reference: _____

Approval: _____
 Date: _____
 Construction: _____
 Unit #: _____
 Drawing #: _____

Performance

Indoor Unit Model No: FXMQ30PVJU
Cooling Capacity (Btu/hr): 30000
Sensible Capacity (Btu/hr): 23884
Cooling Input Power (kW): 0.297
Heating Capacity (Btu/hr): 34000
Heating Input Power (kW): 0.286
Nominal Ext Static Pressure (inH2O): 0.2
Max Ext Static Pressure (inH2O): 0.8

Indoor Unit Type: Duct Mounted Standard Static (DC)
Cooling Nominal Conditions Indoor: 80°F DB/67°F WB
 Outdoor: 95°F DB/75°F WB
Heating Nominal Conditions Indoor: 70°F DB/60°F WB
 Outdoor: 47°F DB/43°F WB
Nominal Piping Length 25
Nominal Height Separation 0

Indoor Unit Details

Power Supply (V/Hz/Ph): 208-230/60/1ph
Power Supply Connections: L1, L2, Ground
Min. Circuit Amps MCA (A): 2.3
Max. Fusible Amps MFA (A): 15
Dimensions (HxWxD): 11-13/16x39-3/8x27-9/16
Panel (HxWxD): N/A
Net Weight (lbs): 80
Weight with Panel (lbs): _____

Airflow Rate (CFM wet coil) 883/706
Moisture Removal (pt/h): _____
Gas Pipe Connection (inch): 5/8
Liquid Pipe Connection (inch): 3/8
Condensate Connection (inch): 1-1/4
Sound Pressure Level (dBA): 43
Sound Power Level (dBA): _____

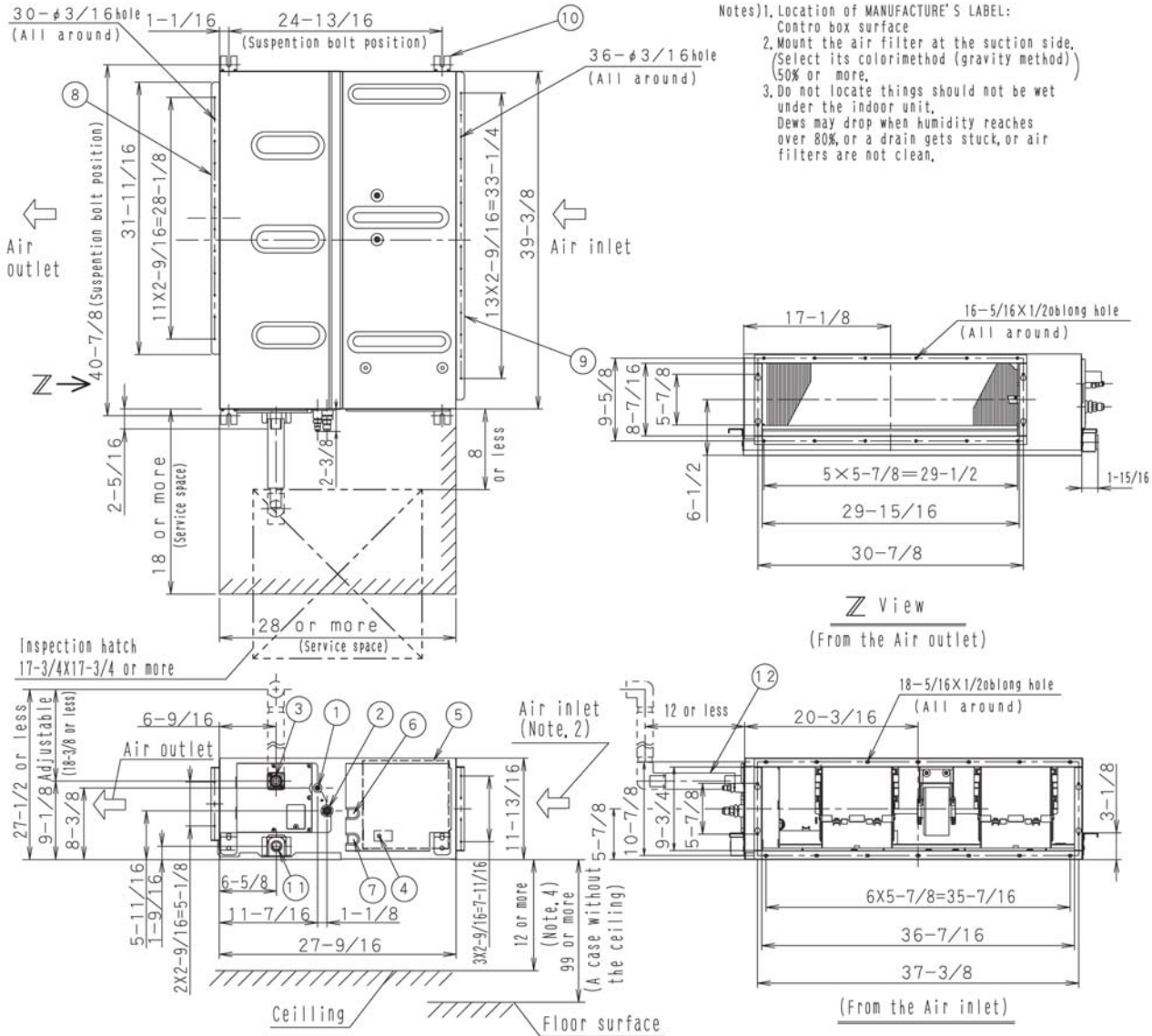
Appearance - Indoor Unit



Project Name: _____
 Location: _____
 Engineer: _____
 Submitted to: _____
 Submitted by: _____
 Reference: _____

Approval: _____
 Date: _____
 Construction: _____
 Unit #: _____
 Drawing #: _____

Dimensional Drawing - Indoor Unit



- Notes) 1. Location of MANUFACTURE'S LABEL:
 Control box surface
 2. Mount the air filter at the suction side.
 (Select its color method (gravity method)
 50% or more.
 3. Do not locate things should not be wet
 under the indoor unit.
 Dews may drop when humidity reaches
 over 80%, or a drain gets stuck, or air
 filters are not clean.

Project Name: _____
Location: _____
Engineer: _____
Submitted to: _____
Submitted by: _____
Reference: _____

Approval: _____
Date: _____
Construction: _____
Unit #: _____
Drawing #: _____

Notes

Std U.S. Warranty: 6yrs Compressor, 1yrs Parts, 1yr Limited Labor